



Marine Safety Information Bulletin

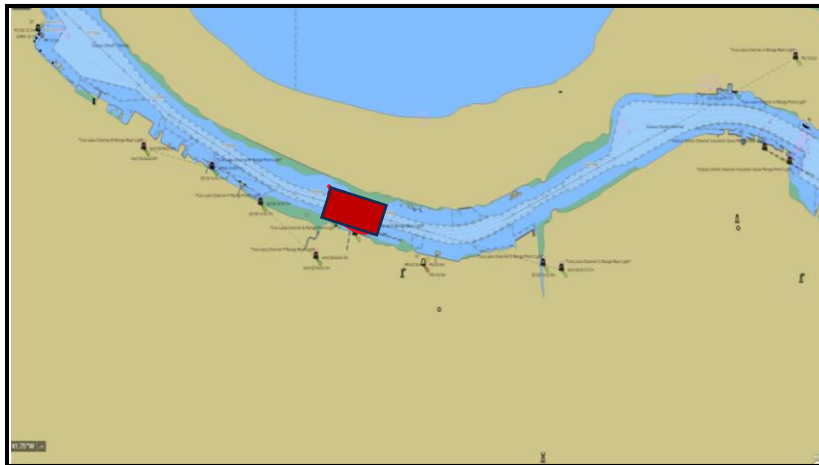
25-24

**Worksite – CCSC, Inner Harbor, near
Epic dock**

Issue Date: April 12, 2024

The Captain of the Port is establishing a worksite in the Corpus Christi Ship Channel, Inner Harbor. Callan Marine has informed the U.S. Coast Guard that they will be installing a submerged pipeline near Epic Dock, on April 12th, 2024 from 11 a.m. to 1 p.m. This operation may impact navigation and may require vessels to take appropriate action for the protection of personnel, vessels, and the marine environment. The coordinates of the worksite are: 27°49'5.55"N, 97°27'59.88"W; 27°48'58.51"N, 97°28'5.89"W; 27°49'2.45"N, 97°28'20.62"W; 27°49'9.68"N, 97°28'19.098"W. No vessels should transit through the safety zone without coordinating through the U.S. Coast Guard. The operation will obstruct all ship and barge traffic during this 2-hour window. The M/V SARATOGA, M/V CORAL SEA, M/V YELLOW EDGE and DREDGE GENERAL MARSHALL will be monitoring VHF channel 12 and 80.

Concerned parties with urgent concerns can contact the U.S. Coast Guard Sector Corpus Christi Command Center at 1-800-874-2143; or for non-urgent questions and concerns, email CCWaterways@uscg.mil.



A handwritten signature in blue ink, appearing to read 'Michael W. Metz'.

M. W. METZ

Commander, U.S. Coast Guard
Sector Corpus Christi

By Direction of the Captain of the Port